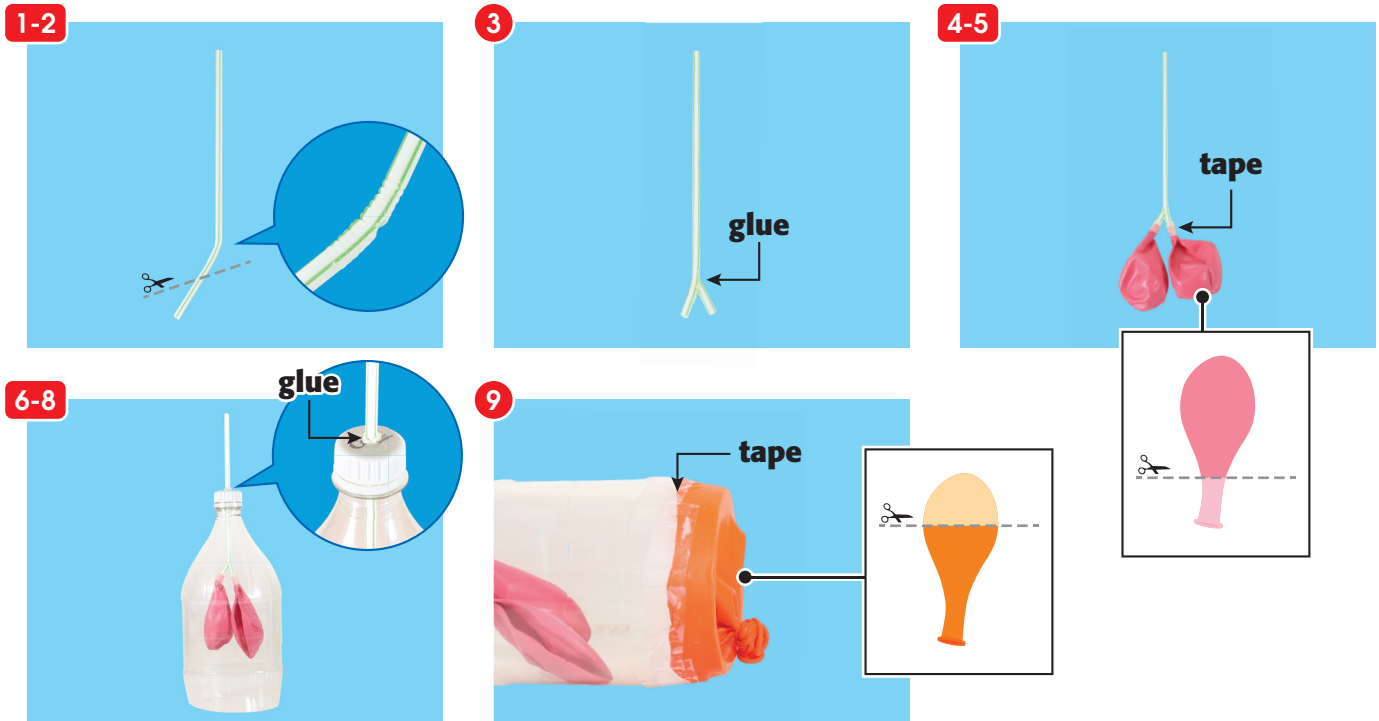




### DEEP BREATHING

The detailed step-by-step instructions below will help you build the lung model.



- 1 Take a bendy straw and cut a small hole at the bendy part.
- 2 Cut out the short end of the other bendy straw at an angle.
- 3 Use the glue gun to glue the short straw over the hole of the bendy straw. Seal any gaps.
- 4 Cut off the ends of two balloons.
- 5 Wrap the openings of the balloons around the straws. Secure with tape.
- 6 Cut off the bottom of the plastic bottle.
- 7 Using the hammer and the nail, make a hole in the bottle cap that is big enough to fit the straw.
- 8 Insert the Y-shaped straw into the bottle. Seal the gap between the straw and the cap with the glue gun.
- 9 Cut off the top of another balloon. Stretch the balloon over the opening of the bottle to seal it. Make sure the balloon opening is tied and the knot is in the centre. Secure with tape.
- 10 Push and pull the knot toward and away from the bottle. Observe.

**Make sure the connected parts are sealed. Otherwise, your model may not work properly.**

